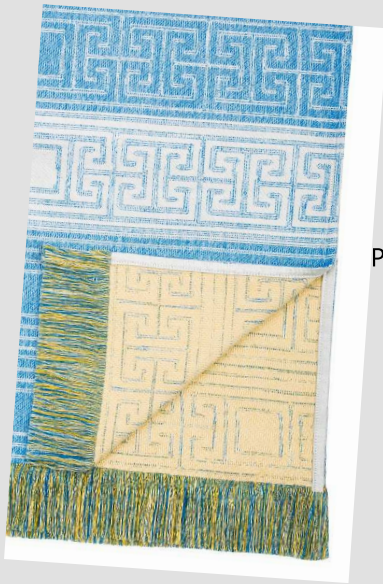


FALL
2017



THROWS

64% rayon 36% cotton

Collections: Coastal Chic & Deco

Product care: Machine wash cold water, gentle cycle, with mild detergent. Do not bleach.
Tumble dry.

These jacquard weave throws have fringe on two sides and are reversible.

Can be made with any of our upholstery fabrics.

Milled in the USA.

3 sizes available:

3' x 4.5' | variable repeat

6' x 4.5' | variable repeat

9' x 4.5' | variable repeat

3 weeks for delivery.

AUDDIE DESIGNS F A B R I C S



DECO WAVES



(DETAIL)

DECO WAVES

This design mimics the art deco look of the famous Paris Exposition of 1925. A jacquard weave throw with a soft hand, it has fringe on two sides and is reversible--with a pattern in peach and blue on the back.

64% rayon, 36% cotton. Machine wash cold water, gentle cycle, with mild detergent. Do not bleach.
Tumble dry.

Made in USA

FT3-1301-B01DW 9' x 4.5' | 9' x 4.5' repeat

AUDDIE DESIGNS

F A B R I C S



DECO CURVES IN RED



(DETAIL)

DECO CURVES IN RED

This design re-creates the curved art deco look of sleek cars and new-to-the-market home gadgets. A jacquard weave throw with a soft hand, it has fringe on two sides and is reversible--with a pattern in light blue and red on the back.

64% rayon, 36% cotton. Machine wash cold water, gentle cycle, with mild detergent. Do not bleach. Tumble dry.

Made in USA

FT1-1301-R01DR 3' x 4.5' | multiple repeat

FT2-1301-R01DR 6' x 4.5' | multiple repeat

FT3-1301-R01DR 9' x 4.5' | multiple repeat

AUDDIE DESIGNS

F A B R I C S



(DETAIL)

DECO CELERY

DECO CELERY

This elegant design mimics the art deco look from textiles on American movie sets designed by the great Cedric Gibbons. A jacquard weave throw with a soft hand, it has fringe on two sides and is reversible--with a pattern in grey, peach and white on the back.

64% rayon, 36% cotton. Machine wash cold water, gentle cycle, with mild detergent. Do not bleach. Tumble dry.

Made in USA

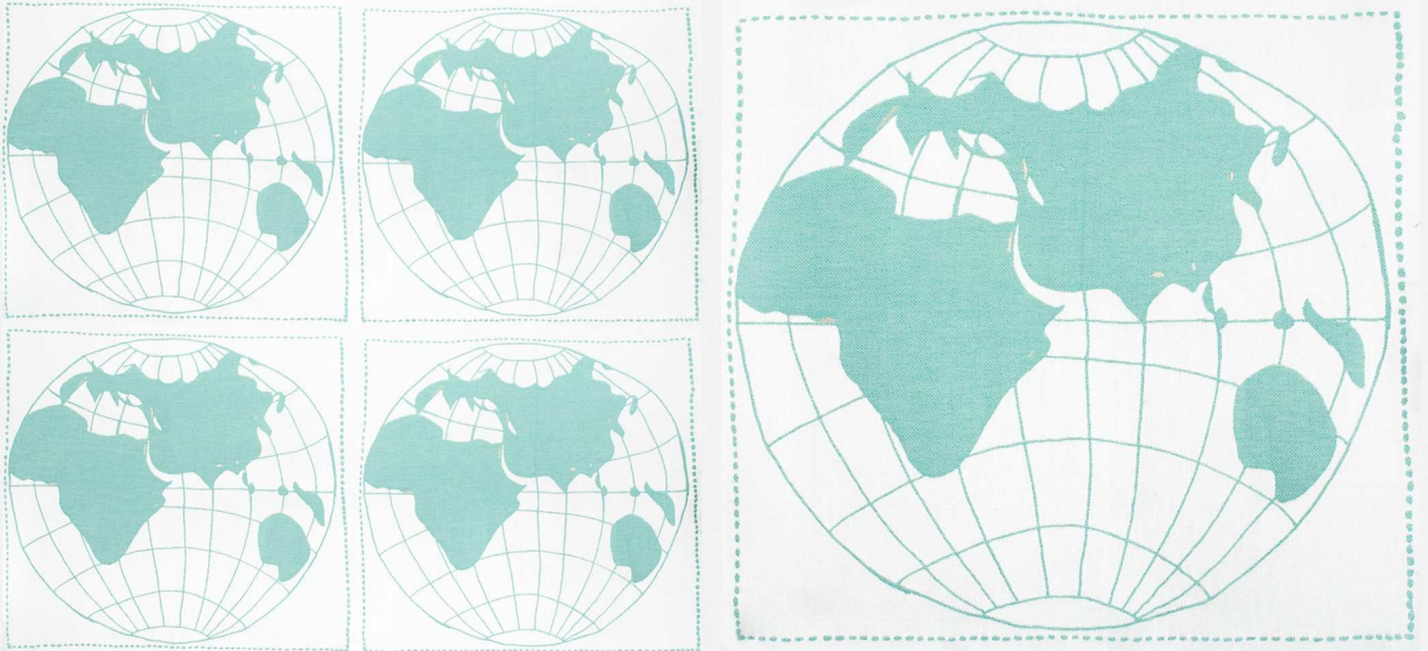
FT1-1701-C01DC 3' x 4.5' | multiple repeat

FT2-1701-C01DC 6' x 4.5' | multiple repeat

FT3-1701-C01DC 9' x 4.5' | multiple repeat

AUDDIE DESIGNS

F A B R I C S



COASTAL CHIC GREEN GLOBE

(DETAIL)

DECO GLOBE

Trott around an imaginary globe from the comfort of your arm chair. A jacquard weave throw with a soft hand, it has fringe on two sides and is reversible.

64% rayon, 36% cotton. Machine wash cold water, gentle cycle, with mild detergent. Do not bleach. Tumble dry.

Made in USA

FT1-1301-B01DG GREEN 3' x 4.5' | multiple repeat

FT2-1301-B01DG GREEN 6' x 4.5' | multiple repeat

FT3-1301-B01DG GREEN 9' x 4.5' | multiple repeat

FT1-1301-G01DG BLUE-GREEN (reverse is purple and gray) 3' x 4.5' | multiple repeat

FT2-1301-G01DG BLUE-GREEN (reverse is purple and gray) 6' x 4.5' | multiple repeat

FT3-1301-G01DG BLUE-GREEN (reverse is purple and gray) 9' x 4.5' | multiple repeat

AUDDIE DESIGNS

T H R O W S



BUTTERFLY LINES



(REVERSE)

BUTTERFLY LINES

From the contemporary line, this whimsical butterfly throw is sure to add cheer to your living space. A jacquard weave throw with a soft hand, it has fringe on two sides and is reversible--with a pattern in white and blue on the back.

64% rayon, 36% cotton. Machine wash cold water, gentle cycle, with mild detergent. Do not bleach. Tumble dry.

Made in USA

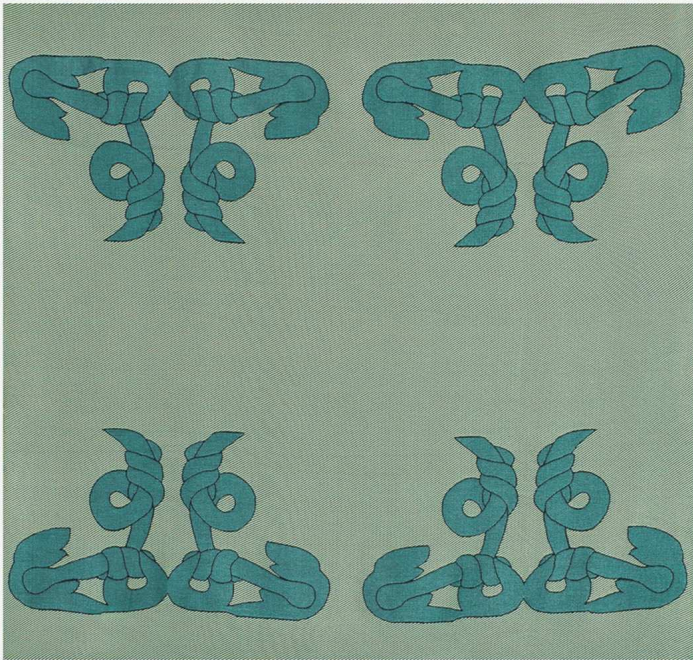
FT1-1301-T01BS 3' x 4.5' | multiple repeat

FT2-1301-T01BS 6' x 4.5' | multiple repeat

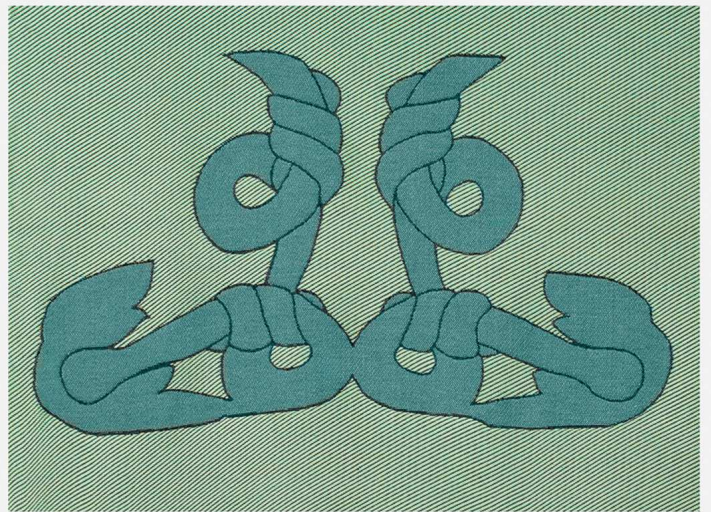
FT3-1301-T01BS 9' x 4.5' | multiple repeat

AUDDIE DESIGNS

F A B R I C S



COASTAL CHIC KNOTS



(DETAIL)

DECO KNOTS

From the coastal chic line, this fun throw is sure to add that nautical touch to your living space. A jacquard weave throw with a soft hand, it has fringe on two sides and is reversible--with a pattern in black and green on the back.

64% rayon, 36% cotton. Machine wash cold water, gentle cycle, with mild detergent. Do not bleach. Tumble dry.

Made in USA

FT1-1301-T01DK 3' x 4.5' | multiple repeat

FT2-1301-T01DK 6' x 4.5' | multiple repeat

FT3-1301-T01DK 9' x 4.5' | multiple repeat

AUDDIE DESIGNS

F A B R I C S



CONCENTRIC CIRCLES



(REVERSE)

CONCENTRIC CIRCLES

A jacquard weave throw with a soft hand, it has fringe on two sides and is reversible--with a pattern in green and white on the back.

64% rayon, 36% cotton. Machine wash cold water, gentle cycle, with mild detergent. Do not bleach. Tumble dry.

Made in USA

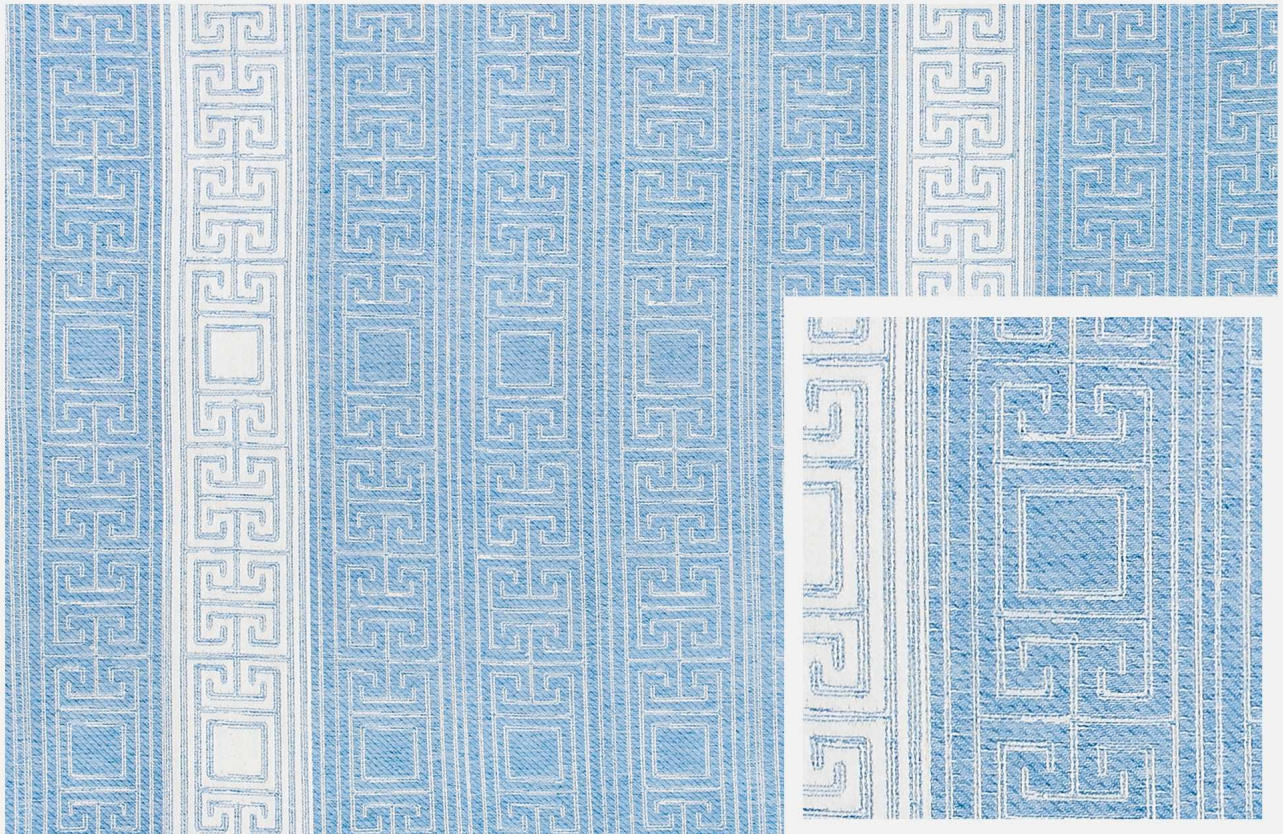
FT1-1301-B01CC 3' x 4.5' | multiple repeat

FT2-1301-B01CC 6' x 4.5' | multiple repeat

FT3-1301-B01CC 9' x 4.5' | multiple repeat

AUDDIE DESIGNS

F A B R I C S



GREEK KEY

(DETAIL)

GREEK KEY

This classic design works in all types of settings. A jacquard weave throw with a soft hand, it has fringe on two sides and is reversible--with a pattern in peach and blue on the back.

64% rayon, 36% cotton. Machine wash cold water, gentle cycle, with mild detergent. Do not bleach. Tumble dry.

Made in USA

FT1-1301-B01GK 3' x 4.5' | multiple repeat

FT2-1301-B01GK 6' x 4.5' | multiple repeat

FT3-1301-B01GK 9' x 4.5' | multiple repeat

AUDDIE DESIGNS

F A B R I C S



DECO PALM



(REVERSE & DETAIL)

DECO PALM

Palm trees line the beach in this bold pattern. A jacquard weave throw with a soft hand, it has fringe on two sides and is reversible--with a pattern in green and gray on the back.

64% rayon, 36% cotton. Machine wash cold water, gentle cycle, with mild detergent. Do not bleach. Tumble dry.

Made in USA

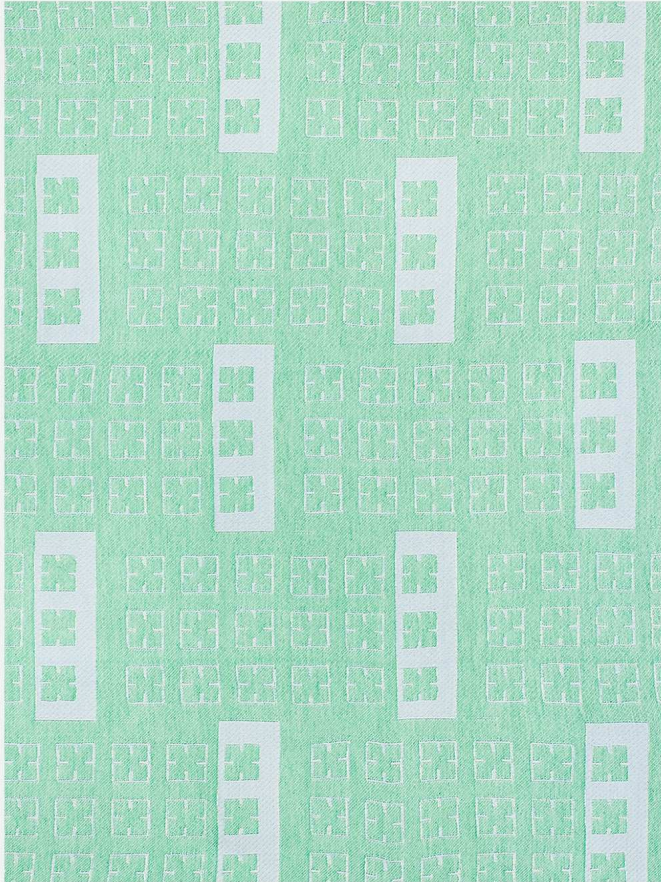
FT1-1301-B01DP 3' x 4.5' | multiple repeat

FT2-1301-B01DP 6' x 4.5' | multiple repeat

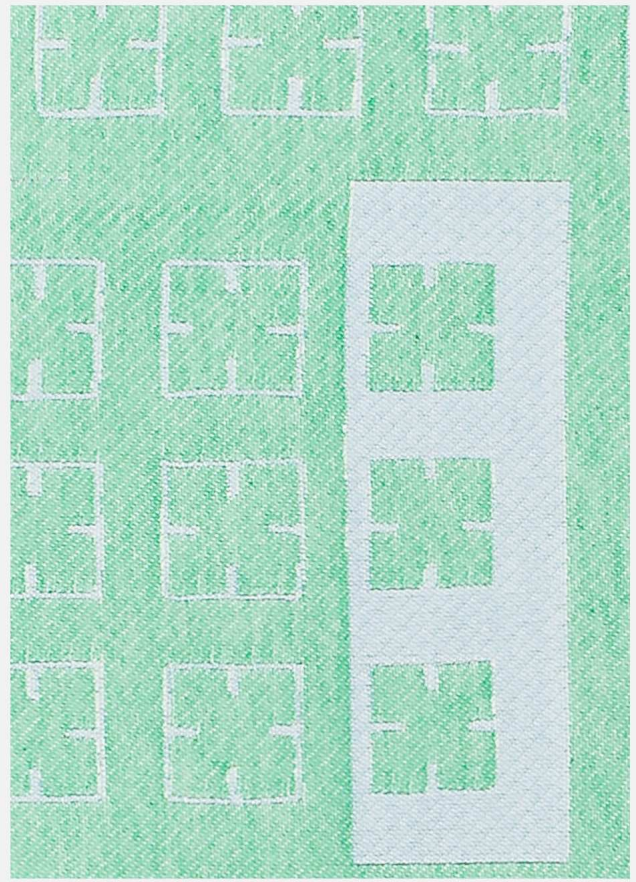
FT3-1301-B01DP 9' x 4.5' | multiple repeat

AUDDIE DESIGNS

F A B R I C S



DAISY CHIPS



(DETAIL)

DAISY CHIPS

A jacquard weave throw with a soft hand, it has fringe on two sides and is reversible--with a pattern in green and yellow on the back.

64% rayon, 36% cotton. Machine wash cold water, gentle cycle, with mild detergent. Do not bleach. Tumble dry.

Made in USA

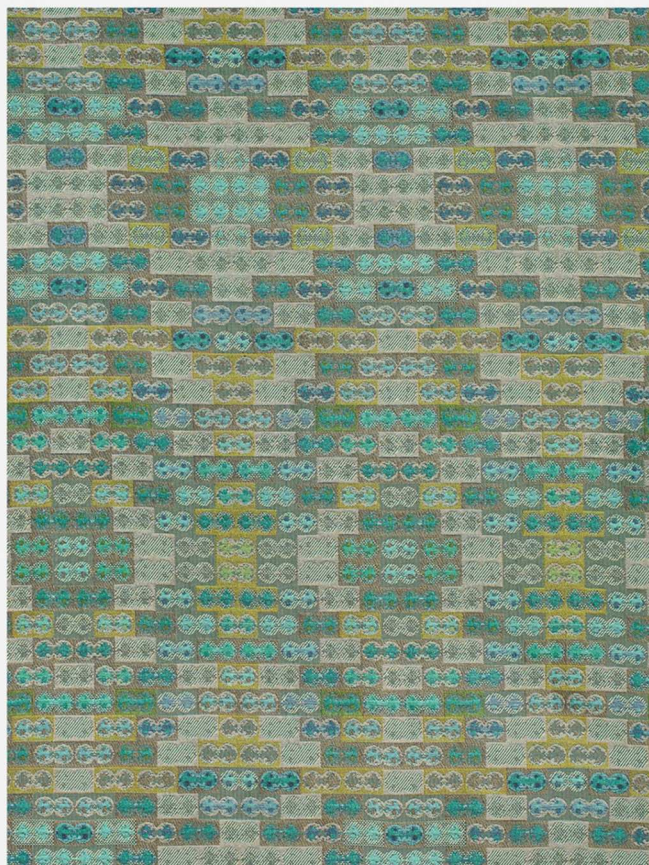
FT1-1301-G01DC 3' x 4.5' | multiple repeat

FT2-1301-G01DC 6' x 4.5' | multiple repeat

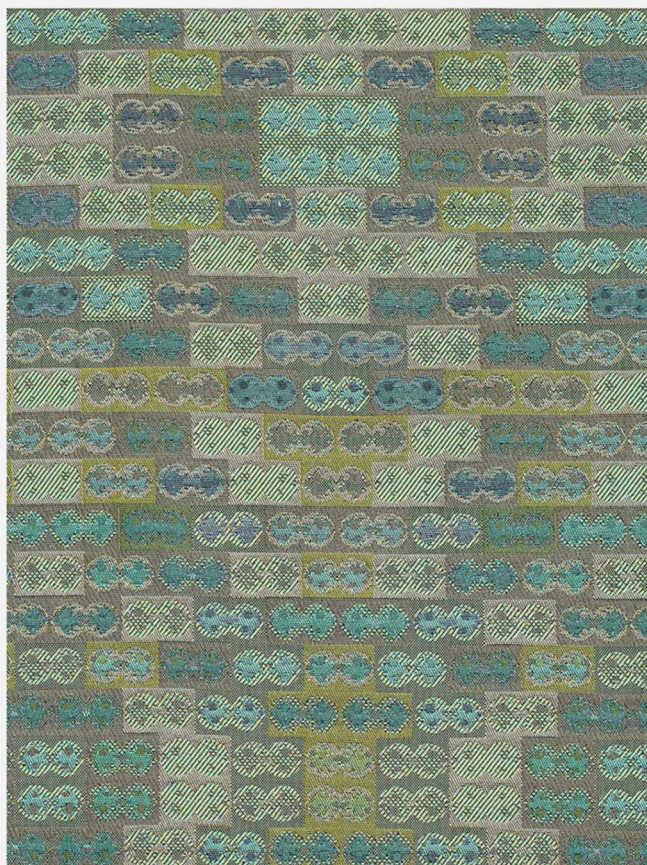
FT3-1301-G01DC 9' x 4.5' | multiple repeat

AUDDIE DESIGNS

F A B R I C S



CONTEMPORARY BUBBLES



(DETAIL)

BUBBLES

From the contemporary line, these summer-inspired bubbles will glisten in the sun on your porch sofa. A jacquard weave throw with a soft hand, it has fringe on two sides and is reversible.

64% rayon, 36% cotton. Machine wash cold water, gentle cycle, with mild detergent. Do not bleach. Tumble dry.

Made in USA

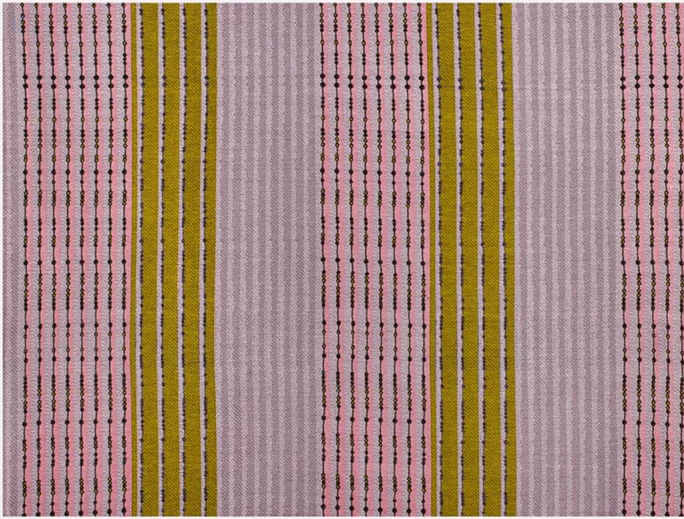
FT1-1701-M01BU 3' x 4.5' | multiple repeat

FT2-1701-M01BU 6' x 4.5' | multiple repeat

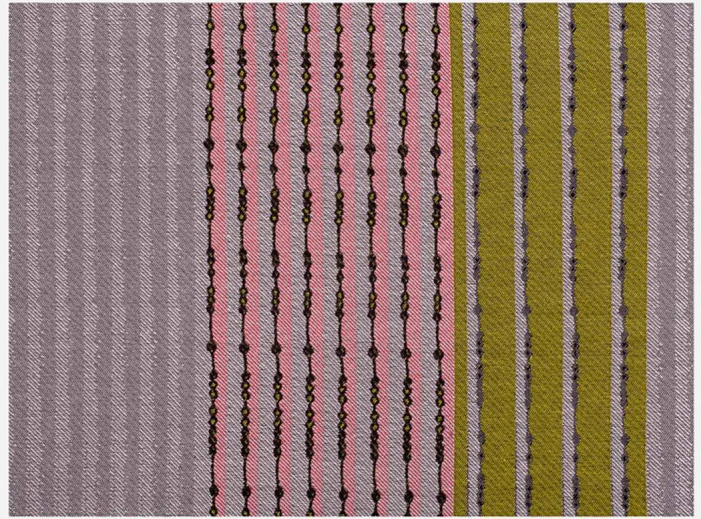
FT3-1701-M01BU 9' x 4.5' | multiple repeat

AUDDIE DESIGNS

F A B R I C S



CONTEMPORARY PEARLS ON A STRING



(DETAIL)

PEARLS ON A STRING

From the contemporary line, this whimsical throw is sure to add cheer to your living space. A jacquard weave throw with a soft hand, it has fringe on two sides and is reversible.

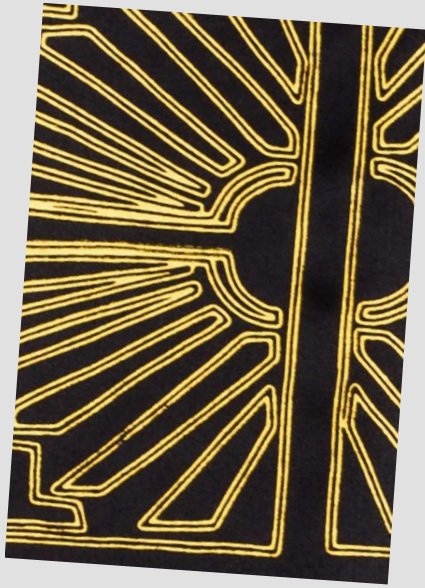
64% rayon, 36% cotton. Machine wash cold water, gentle cycle, with mild detergent. Do not bleach. Tumble dry.

Made in USA

FT1-1301-P01PS 3' x 4.5' | multiple repeat

FT2-1301-P01PS 6' x 4.5' | multiple repeat

FT3-1301-P01PS 9' x 4.5' | multiple repeat



SILK SCARVES

100% Silk

Collection: Deco

Product care: Hand wash, cold water, mild detergent.

Screenprinted in the USA on imported fabric.

2 weeks for delivery.

DECO BLACK & GOLD

This design pays homage to the art deco look of the glamorous wrought iron doors made by the Rose Iron Works firm and others. Luxurious, thick, black silk charmeuse is silk-screened by hand for a one-of-a-kind look with more eco-friendly water-based inks that retain a soft feel. Pattern is one-sided only. The gold ink has a light sparkle.

100% Silk charmeuse. Hand wash. Do not bleach.

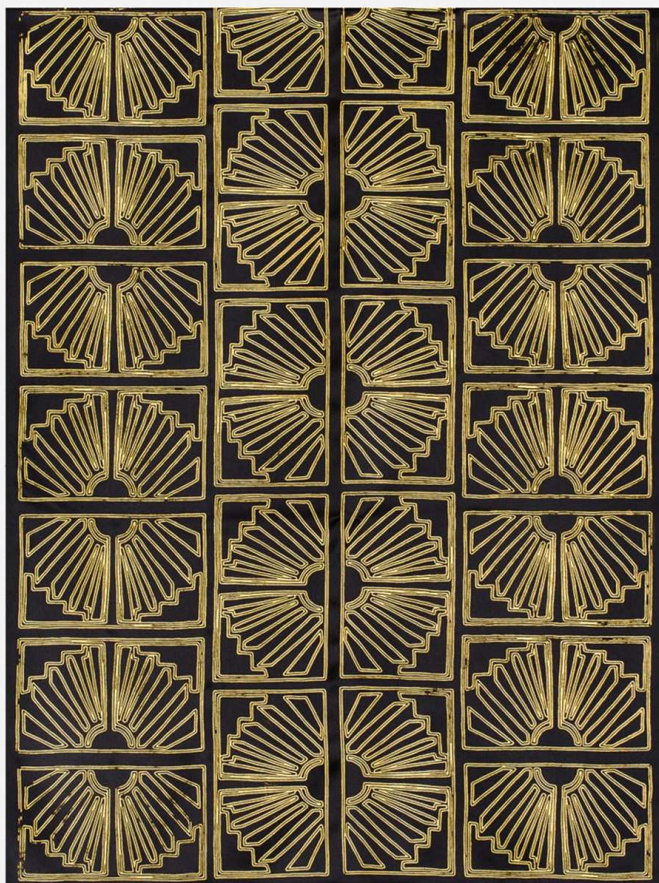
Made in USA of imported fabric.

SS1-1701-B01DB

108" x 28" | 28" x 54" repeat

AUDDIE DESIGNS

F A B R I C S



DECO BLACK & GOLD



(DETAIL)

PILLOWS



Jacquard pillows can be made from any of our upholstery fabrics.
Made in the USA.

3 weeks for delivery.

Linen pillows feature unique hand silk-screened motifs.

2 weeks for delivery.



DECO WAVES

This design mimics the art deco look of the famous Paris Exposition of 1925. These linen pillows are silk-screened by hand for a one-of-a-kind look. Made with water-based inks that are better for the environment and retain a soft feel. Finished with piped edge in self-facing fabric and a matching zipper for easy removal. Pattern is one-sided only. The blue ink has an added pearlescent ink for a light sparkle.

100% European linen. Felt-lined. Machine wash cold water, gentle cycle with mild detergent. Do not bleach. Tumble dry. Hot iron on the inside only.

Made in USA of 60% US content and 40% imported fabric.

PI1-1302-W01DW WHITE

PI1-1302-B01DW BLUE

19" x 19" | 19" x 19" repeat



GLOBE TROTTER

This jacquard weave pillow has a smooth, soft feel. Finished with piped edge in self-facing fabric and a zipper for easy removal. Pattern is the same on both sides.

64% rayon 36% cotton. Felt-lined. Machine wash cold water, gentle cycle with mild detergent. Do not bleach. Tumble dry.

MADE IN USA

PI2-1302-B01DG (blue)

PI2-1302-G01DG (teal green)

28" x 26" | 28" x 26" repeat





BAGS

Canvas bags can be made from any of our upholstery fabrics. Sailcloth bags feature unique hand-carved stamp motifs.

MADE IN USA.

3 weeks for delivery.



BOOK TOTE

Jacquard weave upholstery canvas fabric. Finished with reinforced bottom and self-facing trim. Nylon webbing for the handles with re-inforced stitching.

49% polyester, 34% rayon, 17% cotton. Machine wash cold water, gentle cycle, mild detergent, do not bleach, tumble dry

Made in USA

TB1-1701-G01DA

17" x 12.5" | 6.5" x 9" image



LET'S GO SAILING BAG

Every sail cloth bag is unique, as the pieces are cut from different parts from genuine used sails out of Florida. These recycled sail bags are silk-screened by hand with an old-timey cruise ship design that reads "Castle Island". Finished with webbing for the handles. Pattern is one-sided only. Available with red handles.

100% dacron. Spot clean only.

Made in USA

ST1-1701-B01CI

17" x 12.5" | 6.5" x 6" image

Audrey Hopkins

surface designer

Boston MA 02127

857.496.1157

auddie@audreyhopkins.com

www.audreyhopkins.com



**NOTE: WEBSITE IS CHANGING TO
WWW.AUDDIEDESIGNS.COM
IN LATE NOVEMBER**

